

# MONTHLY MEMBERSHIP PROGRESS REPORT

LOCATION NEBRASKA

District 38 I

Results as of: 3/31/2022

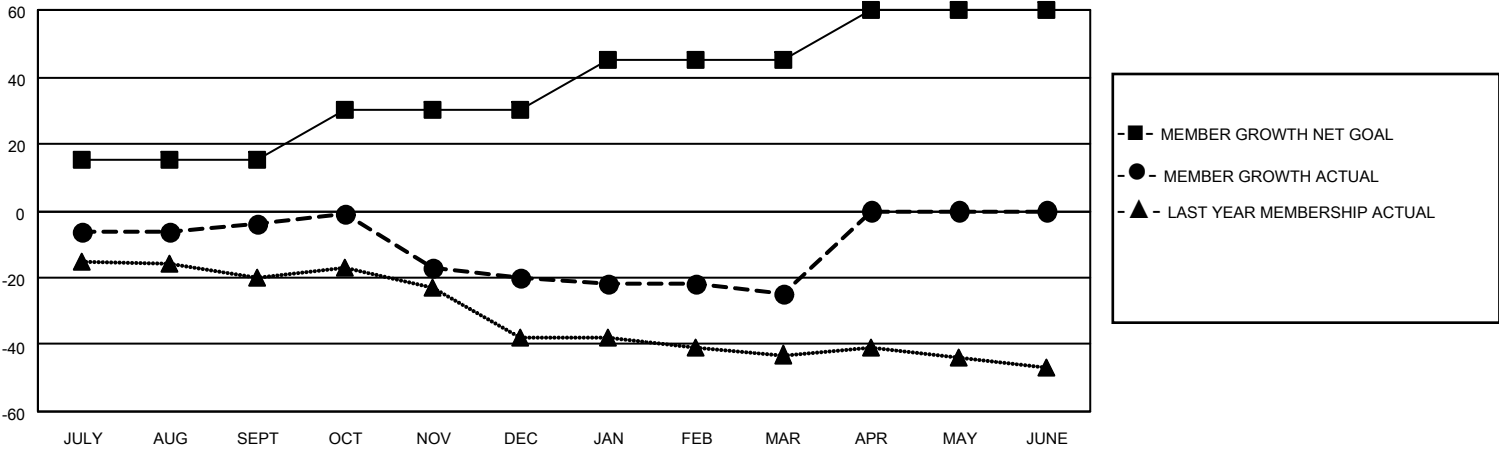
Clubs			
RESULTS FOR 2021-2022			
QUARTER	NEW CLUB GOAL	NEW CLUBS	DROPPED CLUBS
JULY/AUG/SEPT	0	0	0
OCT/NOV/DEC	0	0	0
JAN/FEB/MAR	1	0	0
APR/MAY/JUNE	0	0	0

Members			
RESULTS FOR 2021-2022			
QUARTER	MEMBER GROWTH NET GOAL	MEMBER GROWTH ACTUAL	DROPPED MEMBERS ACTUAL (including transfers)
JULY/AUG/SEPT	15	7	11
OCT/NOV/DEC	15	10	26
JAN/FEB/MAR	15	8	13
APR/MAY/JUNE	15	0	0

**GOALS AND ACTUAL NEW CLUBS CUMULATIVE**



**GOALS AND ACTUAL MEMBERS CUMULATIVE**



DROPPED CLUBS: 0	
<u>DROPPED MEMBERS</u>	
DECEASED	9
CLUB CANCELLED	0
OTHER	41
<b>TOTAL</b>	<b>50</b>

14 CLUBS OF 33 ADDED 1 OR MORE NEW MEMBERS

[CLICK HERE FOR CUMULATIVE MEMBERSHIP DATA](#)

<u>GENDER DISTRIBUTION</u>	
MALE	550 (71.80%)
FEMALE	216 (28.20%)
NON BINARY	0 (0.00%)
PREFER NOT TO ANSWER	0 (0.00%)
<b>TOTAL FAMILY UNIT MEMBERS</b>	<b>196</b>
<b>FAMILY MEMBERS PAYING HALF DUES</b>	<b>99</b>